

# ANCIENT BENIN KINGDOM

**GENEVA F.**

---

**BOROUGH OF MANHATTAN COMMUNITY COLLEGE, BMCC**

**PROF. REMI ALAPO**

**AFRICAN CIVILIZATIONS**

**AFN 121:1400**

**FALL 2021**





# ANCIENT AFRICA: NIGERIA –BENIN KINGDOM

“Located on the Western Coast of Africa”. ([Nigeria | History, Population, Flag, Map, Languages, Capital, & Facts | Britannica](#) )

Ancient Africa Nigeria was known as “the Benin Empire” or “Benin Kingdom. We just have to remind myself, it’s name is was separate from Benin the country.

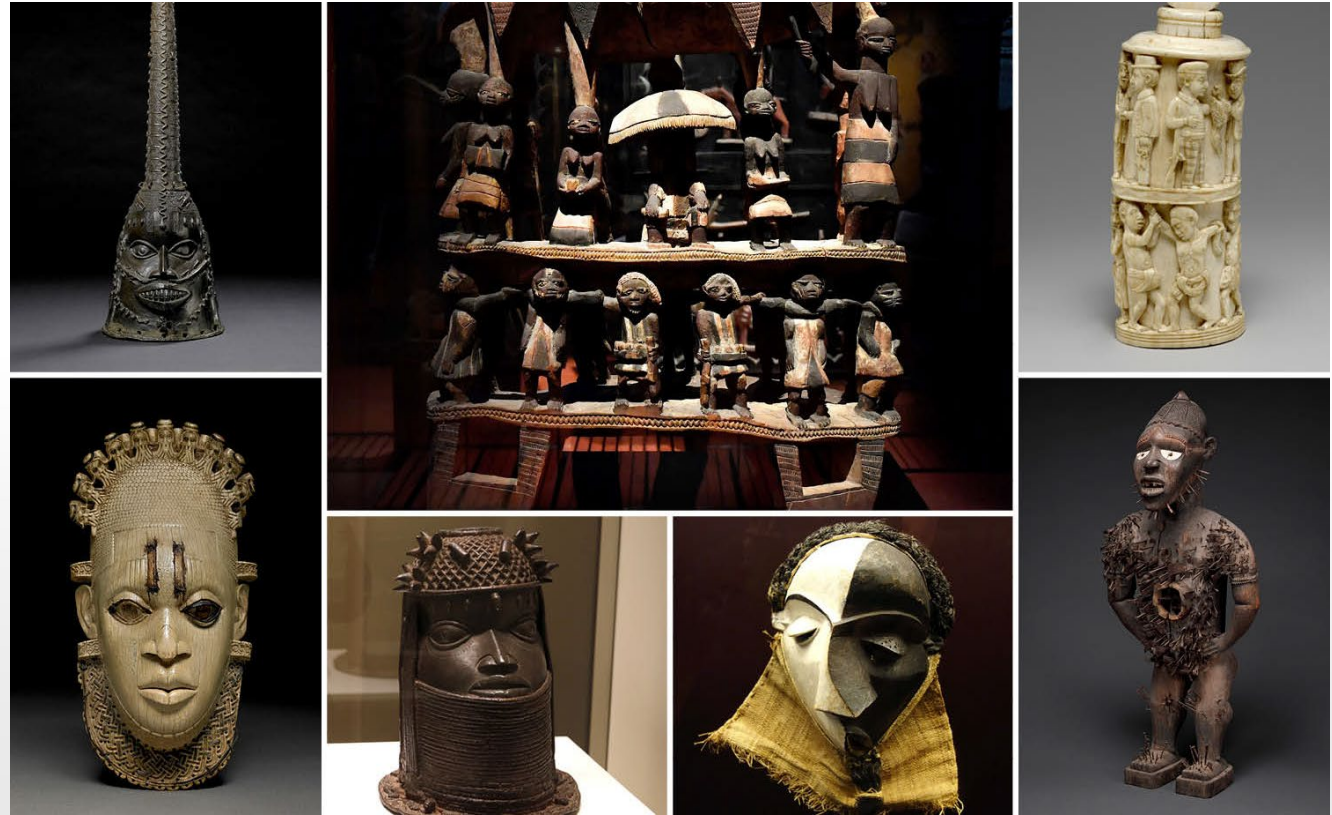
Has many languages (English, Edo, Hausa, Ibibo, Igbo, Tiv and Yoruba) and a diversity of people.

# BENIN KINGDOM ARTIFACTS

A marker for black civilization achievements.

According to Gbadamosii (2020, Before the mechanical age was found by archaeologist, to have “the worlds largest built”. earthworks.

This picture is of historical artworks from African remain outside the continent”. (Trustees of the British Museum).



<https://foreignpolicy.com/2020/07/28/time-repatriate-africa-looted-art-artifacts-cultural-heritage-benin-bronzes-nigeria-ghana-europe-british-museum/>

# “BAS-RELIEF OF AN OBA”

---

- Bas-Relief is an art form/ art technique. “Sculptural relief in which the projection from the surrounding surface is slight or no part of the molded form.” (Merriam Webster Dictionary)..
- It is not that hard to tell, that the biggest person is holds prestigious positions. Just like the Oba's decorated palace, the people sculpted are wearing ceremonial dresses and weapons. The ceremonies they had was to show how loyal its people were, even by the means of sacrificing humans to show their devotion.
- The term Oba came from Benin under their first King Eweka. This was after Benin was founded by South Nigerians. Under Oba Ewuare Benin Kingdom was improved and expanded.



<https://www.nationalgeographic.org/encyclopedia/kingdom-benin/>

# ART FOR LEGITIMACY

---



- This sculpture is a relief Plaque, who artist is unidentified.
- Not one of the earliest one's created but still serves its purpose. It was made to show the kings authority, and to honor his might.
- It also shows who is in "direct service to the crown." like his son.

<https://www.khanacademy.org/humanities/art-africa/west-africa/nigeria/a/the-imagery-of-power-on-benin-bronze-plaques>

# CONCLUSION

---

- Ancient African Civilizations have shown people, there are more than one ways to leave a legacy behind. One of those ways are through artifacts, uncovered and taken to museum. Some of them are stolen and are starting to be returned to their rightful place. The thing I like about artifacts is that they tell stories in their own way. Artifacts in Ancient Nigeria – Benin Kingdom shows how they lived and who were in power. If I was to see an Bas-relief of an Oba I can finally understand, why they look the way they do; other than from an artist point of view.

# WORK CITED/ REFERENCE PAGE

---

- The Editors – Britannica Encyclopedia ([Nigeria | History, Population, Flag, Map, Languages, Capital, & Facts | Britannica](#) )
- Nomot Gbadamosi (July 2020), “ Is it Time to Repatriate Africa’s Looted Art?” ([Amid Black Lives Matter Protests, Is It Time to Repatriate Africa’s Looted Art? \(foreignpolicy.com\)](#))
- National Geographic Society (June 2020), “The Kingdom of Benin” (<https://www.nationalgeographic.org/encyclopedia/kingdom-benin/> )
- Merriam Webster since 1828 dictionary ([Bas-relief Definition & Meaning - Merriam-Webster](#))
- Dr. Kathryn Wysocki Gunsch “The Imagery of Power on Benin Bronze Plaques” ([The Imagery of Power on Benin Bronze Plaques \(article\) | Khan Academy](#) )