

THE BENIN IVORY MASK

BY SOLA S.
AFN 121, BMCC
PROF. REMI ALAPO
FALL 2021



BENIN CITY

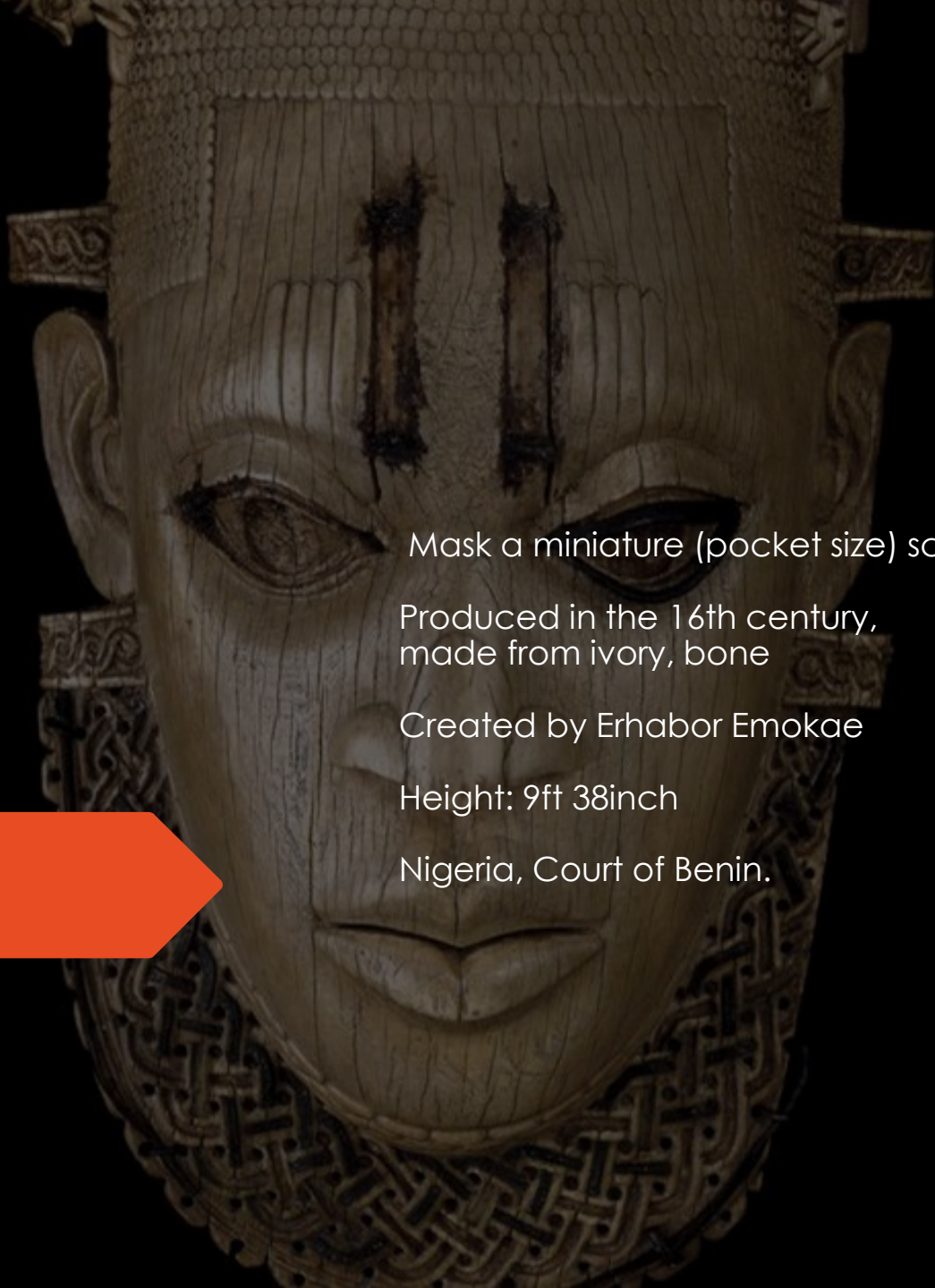
- *Known as Edo, capital*
- *largest city of Edo state, southern Nigeria*
- *Is situated on a division of the Benin River sits along the central highways from Lagos to the eastern states.*
- *The Oba's Palace is known for bronze plaques that once decorated the walls, depicting historical events and life at court.*





QUEEN MOTHER

- ▶ Idia was the mother of Esigie,
- ▶ the Oba of Benin ruled -1504 to 1550
- ▶ She played a very significant role in the rise and reign of her son
- ▶ Described as a great warrior who fought persistently before and during her son's rule as the Oba of the Edo people



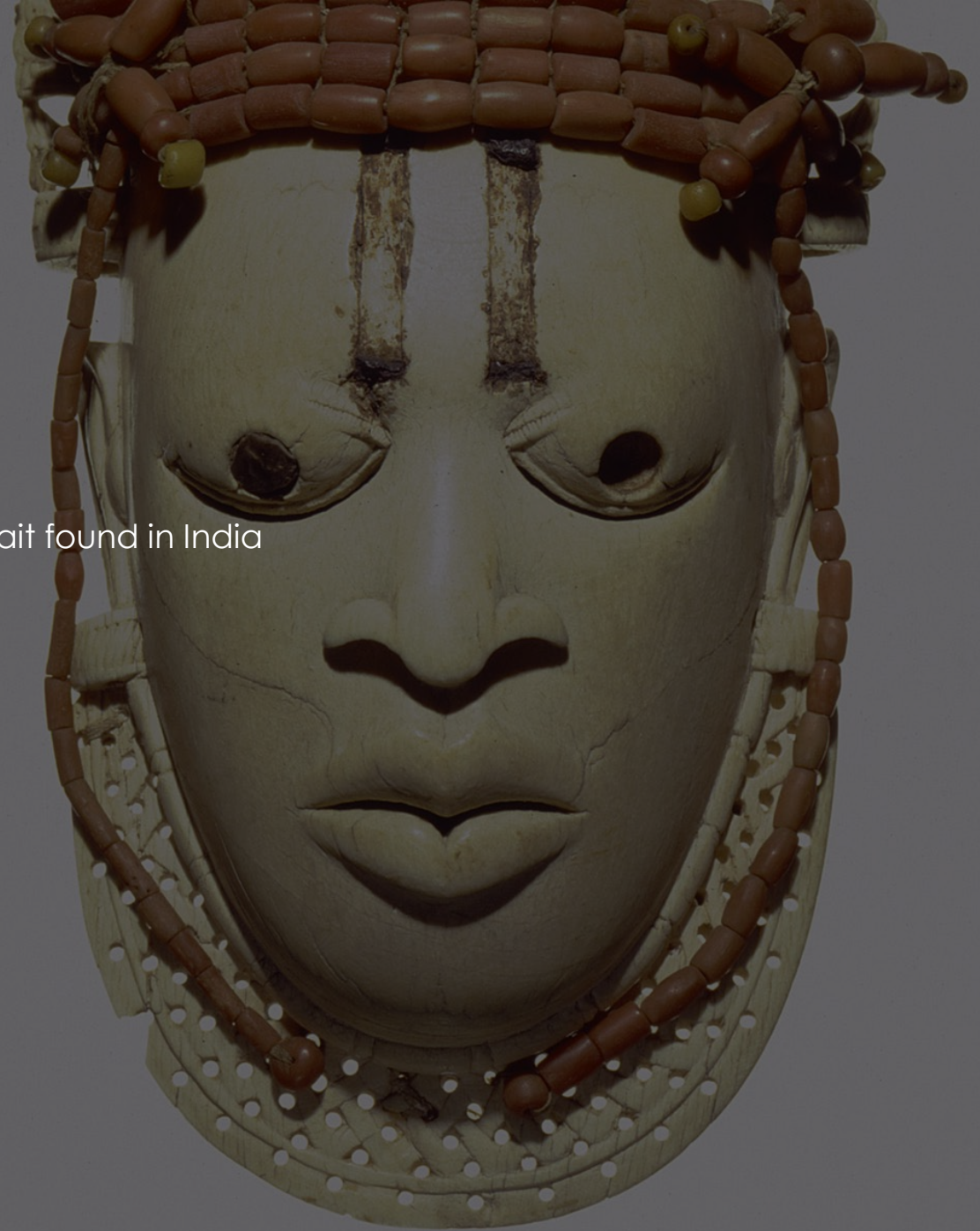
Mask a miniature (pocket size) sculpture portrait found in India

Produced in the 16th century,
made from ivory, bone

Created by Erhabor Emokae

Height: 9ft 38inch

Nigeria, Court of Benin.



IMPORTANCE OF MASK

The mask was created by the King of Benin in honor of his mother, Idia.

In Benin ivory symbolizes white, a symbol of ritual, purity associates with Olokun the god of sea.

Three of the ivory mask are placed in (1) Metropolitan Museum of Art, (2) British Museum, London and Linden Museum, Stuttgart.



The mask were use in ceremonies as the Ugie lyoba and the Embo purification ceremony.

poses carvings from the early period of Benin art



HERITAGE

This mask has established an iconic image of Benin art

The Edo artist Erhabor Emokae recreated the mask 20-foot-tall centerpiece for the festival in 1979 at the National Arts Theater Festival



► SOURCES

<https://www.britannica.com/place/Benin-City>

https://www.metmuseum.org/toah/hd/pwmn_3/hd_pwmn_3.htm

<https://en.wikipedia.org/wiki/Idia>

https://en.wikipedia.org/wiki/British_Museum

https://upload.wikimedia.org/wikipedia/commons/5/5f/Miniaturmaske%2C_Edo.jpg